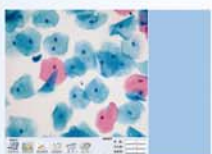


↳ Lituo Text-Image System

- User-friendly and easy-to-use interface.
- Image collection, process and comparison function.
- Integrated record storage and management function.
- Standardized report, multi-formats available.



Collect image



Generate report



Search for report

Liquid-based Thin Layer Cytological Test Report			
LT-YJ1000		Cell No: Received Date:	
Name:	Age:	Outpatient/Admission No:	Ward No:
Submission Hospital:	Department:	Submission Doctor:	
Specimen Type:	Method of Slide Review:	Degree of Specimen Satisfaction:	
Specimen Satisfaction Item:			
1) Number of Epithelial Cells			
2) Squamous Cells			
3) Biochemical Cells			
Inflammation Degree:			
Microorganism:			
1) Actinomyces			
2) Degree of Flora Abnormality			
3) Infection of Trichomonas			
4) Infection of Fungi			
5) Infection of Mollusc			
6) Infection of HPV			
7) Infection of Herpesvirus			
Analysis of Squamous Cells:			
Analysis of Glandular Epithelium:			
Diagnostic Summary:			
Supplementary Suggestions:			
Pathologist:	Re-examination Doctor:	Test Time:	
This report is just for clinical reference and cannot taken as proof material			



LTS-YJ1000

Cyto-centrifuge Smear Processor

➤ Introduction

By employing cells coating, gradient centrifuge and filtration dispersion techniques, LYS-YJ1000 effectively separates non-diagnostic debris and sediment adequate diagnostic cells on Lituo specially siliconized glass slide to prepare high quality thin-layer cytological smear.

➤ Features

Convenient:
1-12 specimen at one time;
Same sample can be prepared repeatedly.

Quick:
Batch processing time is less than 5 minutes.
The standard diameter of smear is 13mm.

Intelligent:
Simple operation interface; all parameters can be preserved and adjusted accordingly.

Multi-functional:
Applicable to several specimen type. Parameters such as specimen quantity, operation time and speed can be adjusted as demand.

Stable:
The BLDC motor ensures steady rotating speed and operational accuracy. Additional damper also guarantees stable operation.

➤ Application

Applicable to the smear preparation of various specimens from human body before pathological analysis.



Cervical cells smear



Pleuroperitoneal fluid smear

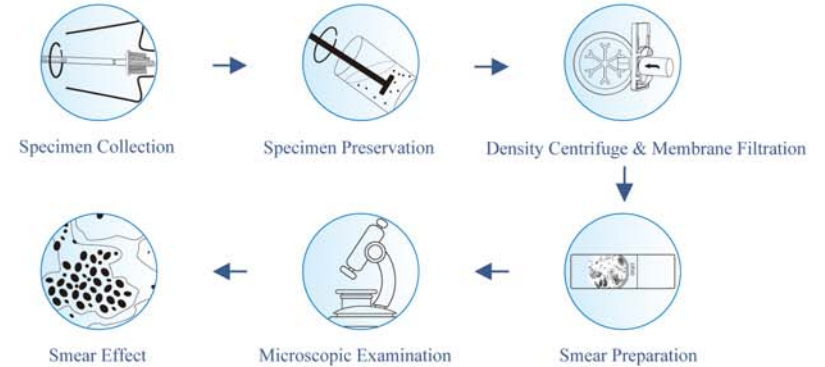


Sputum smear



Urine, gastric juice, plural effusion, cerebrospinal fluid smear

➤ Operation Procedures



➤ Consumables



• **Cell Preservative Solution**
Special designed formula to decompose mucus and disperse cells;
The preservative cells can reach to 100% for 4 weeks.



• **Cytobrush**
Detachable brush head enables easy specimen collection without hurting patients;
The quantity of collecting cells is no less than 50,000.



• **Composable Part (Membrane & Glass Slide)**
Fix the cells in the middle of glass for easy microscopic observation.
Specially designed membrane can effectively remove non-diagnostic debris.



• **Glass Slide**
Siliconized & dust-free glass slide with positive charge that carry negative leison cells more strongly and prepare more evenly dispersed smear.