



PLD6000
HF Digital Radiography & Fluoroscopy System

Clinical Application

PLD6000 is a remote controlled R&F system designed for maximum patient throughput and application flexibility .in the demanding environment of your imaging department, PLD6000 is a perfect mix of flexibility, ease of use, image quality and connectivity allow you to get the best out of your R&F room.



PLD6000

HF Digital Radiography & Fluoroscopy System

Features

High definition images thanks to the high frequency generator and digital acquisition system.



Our high frequency technology assures the best images in every operating condition along with reduced patient dose and extended x-ray tube lifetime.



Small focus, high output power is suitable for routine radiography check.

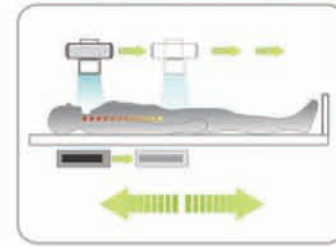


Advanced image intensifier and state-of-art CCD camera provide you the high definition digital image.

Product Configuration

Remote Control console	1set	Multi-leaf beam limiting device	1set
X-ray tube assembly	1set	X-ray generator	1set
Image intensifier	1set	Diagnostic table	1set
CCD camera	1set	High voltage cable	1set
high definition medical monitor	1set	Digital image system(option)	1set

Multiple-function diagnostic table system



The wide scanning range of spot film device and image system provides complete patient coverage without the need for longitudinal tabletop movement.



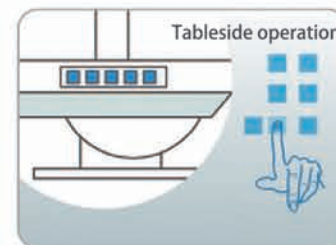
The one-hand cassette loading and unloading mechanism grants a maximized speed for this frequent operation.



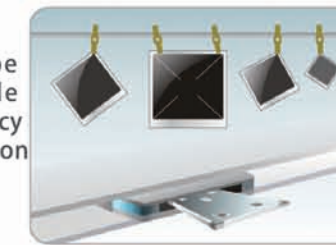
The table can be rotate in many directions.



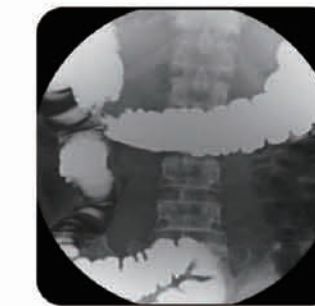
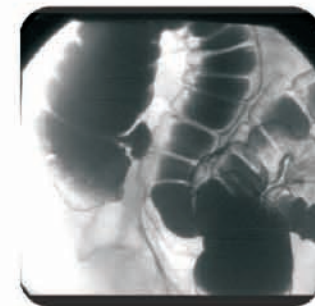
Motorized 360° rotated plate provides a perfect balance between operational efficiency and patient comfort.



All table movement can be activated via the tableside keyboard to improve efficiency during the patient preparation phase.



Rich size of film is available : 8"×10"~14"×17".



Digital Image system (optional)



The fully digital image processing system increase the accuracy of diagnoses and broaden clinical application. realize the multi-grade denoise, various storage, LIH, negative and positive, image reverse of the image.

System upgrading ability

- ※DICOM 3.0 international interface, support image network and remote diagnosis.
- ※Optional: DSA function.
- ※Optional: digital interface for dry film printer and video printer.



image storage



noise reduction

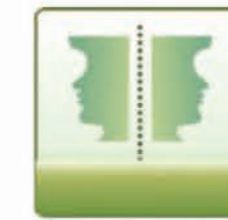


image flip



negative and positive



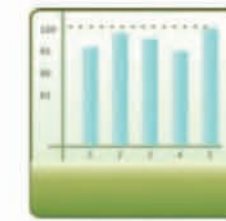
last image hold



low noise



rich grey level



high quality

Technical Parameters

Item		PLD6000
Power Output		50kW
Inverter Frequency		100 kHz
Dual-focus		Large focus:0.6 Small focus:1.2
Voltage		380V±38V
Frequency		50Hz±1Hz
Radiography	Tube Voltage	40kV~150kV
	Tube Current	10mA~630mA
	Exposure time	1.0~6300ms
	Control interface	LCD touch screen
Fluoroscopy	Tube Voltage	40kV~125kV
	Tube Current	0.5mA~6mA