



More details **Less dose**
Convenient **Safety**



Two gears exposure hand brake



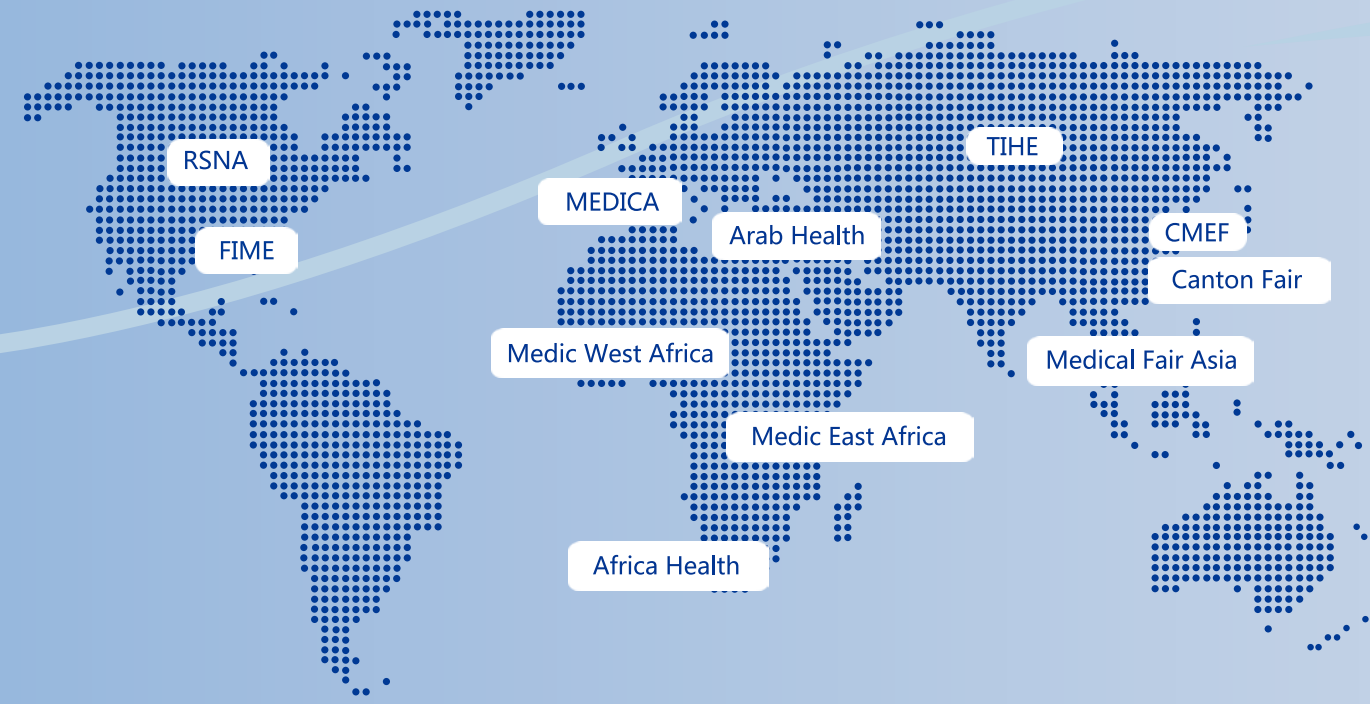
Remote hand-held controller (available in 20 meters)



Compact operation panel, intuitive interface, easy to operate.

Application

The machine is mobile X-ray radiography medical diagnostic equipment. It can be used in wards, operation rooms and emergency rooms etc to satisfy the radiography requirements of human body such as head, chest and limbs etc.



PLX101D

The flexible movement of the unit thanks to main wheel and direction wheel design.

PLX101series

High Frequency Mobile X-ray Equipment

PLX101/101A/101C



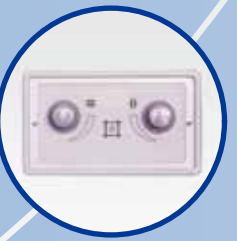
Rocker safety lock design, make your operate much safer.



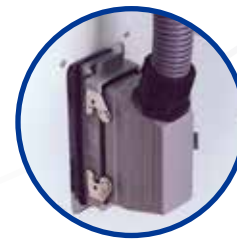
High quality x-ray monoblock assures more details, less dose.



Symmetrical adjustable collimator for accurate positioning and better exposure protection.



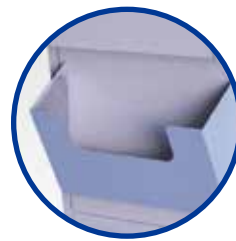
Aviation aluminum connectors, connection reliable, more safety.



Advanced dislocation braking system, flexible movement, reliable braking.



Multifunctional cassette storage box design.



Features

- ※Our high frequency technology assures the best image in every operating condition along with reduced patient dose and extended x-ray tube life time .
- ※The generator provide the right amount of penetration, reducing exposure times and retakes.
- ※The parameter can be adjusted by the kV and mAs . multiple security protect function such as over-voltage, over-current.
- ※50 preset exposure programs allow extensive possibilities to optimize the exposure and processing parameters according to your preferences.
- ※Fault automatic protection setting and fault alarming display.
- ※Parameters are automatically storage when power cut off.
- ※Adopt rotating beam limiting device to adjust the X-ray field and angle freely.
- ※Adopt manual controller and remote controller to do exposure.
- ※Optional: PLXF152 mobile table for high frequency mobile X ray equipment.
- ※PLX101D is equipped with built-in battery, can take 200 films when full charged.

Technical Parameters

Item	PLX101	PLX101A	PLX101C	PLX101D(with build-in battery)
Power Output	2.5kW	3.5kW	5kW	5kW
Main Inverter frequency	50KHz			
X-ray Tube	1.5	1.5	1.5	1.5
Tube Voltage	40~100kV (interval 1kV)	40kV~110kV (interval 1kV)	40kV~120kV (interval 1kV)	40kV~120kV (interval 1kV)
Tube Current	40~49kV 50mA 1~160mAs	40~49kV 63mA 1~125mAs	40~49kV 100mA 1~180mAs	40~49kV 100mA 1~180mAs
	50~59kV 42mA 1~160mAs	50~59kV 55mA 1~110mAs	50~59kV 77mA 1~140mAs	50~59kV 77mA 1~140mAs
	60~69kV 36mA 1~140mAs	60~69kV 45mA 1~90mAs	60~69kV 64mA 1~125mAs	60~69kV 64mA 1~125mAs
	70~79kV 31mA 1~125mAs	70~79kV 40mA 1~80mAs	70~79kV 55mA 1~110mAs	70~79kV 55mA 1~110mAs
	80~89kV 28mA 1~100mAs	80~89kV 36mA 1~71mAs	80~89kV 49mA 1~100mAs	80~89kV 49mA 1~100mAs
	90~100kV 25mA 1~80mAs	90~100kV 32mA 1~63mAs	90~99kV 44mA 1~80mAs	90~99kV 44mA 1~80mAs
		100~110kV 20mA 1~40mAs	100~109kV 32mA 1~63mAs	100~109kV 32mA 1~63mAs
			110~120kV 25mA 1~50mAs	110~120kV 25mA 1~50mAs
mAs	1.0~160mAs (45 steps)	1.0~125mAs (43 steps)	1.0~180mAs (46 steps)	1.0~180mAs (46 steps)
Power Supply	220V ± 10% 50HZ Inner-resistance ≤ 1.0Ω	220V ± 10% 50HZ Inner-resistance ≤ 1.0Ω	220V ± 10% 50HZ Inner-resistance ≤ 1.0Ω	220V ± 10% 50HZ Inner-resistance ≤ 1.0Ω
Operation Method	Wire/wireless control	Wire/wireless control	Wire/wireless control	Wire/wireless control

PLXF152 Mobile Bed For Mobile X-ray Machine

Size: 2000 × 700 × 500mm

Range of grid box movement ≤ 1210mm

Size of grid box: 430 × 430(17" × 17")

Pictures for reference only, subject to our available products

Options



Rocker can move up and down, automatically balance



High quality X-ray monoblock can rotate in ± 90 °



Bucky Stand

Height :1770mm

Vertical movement range: 470~1470mm

Grid density:103L/inch

Grid ratio:10:1

Focus distance:150cm

Maximum grid box:17" × 17"

