



PLX8500C/D
High Frequency Digital Radiography System

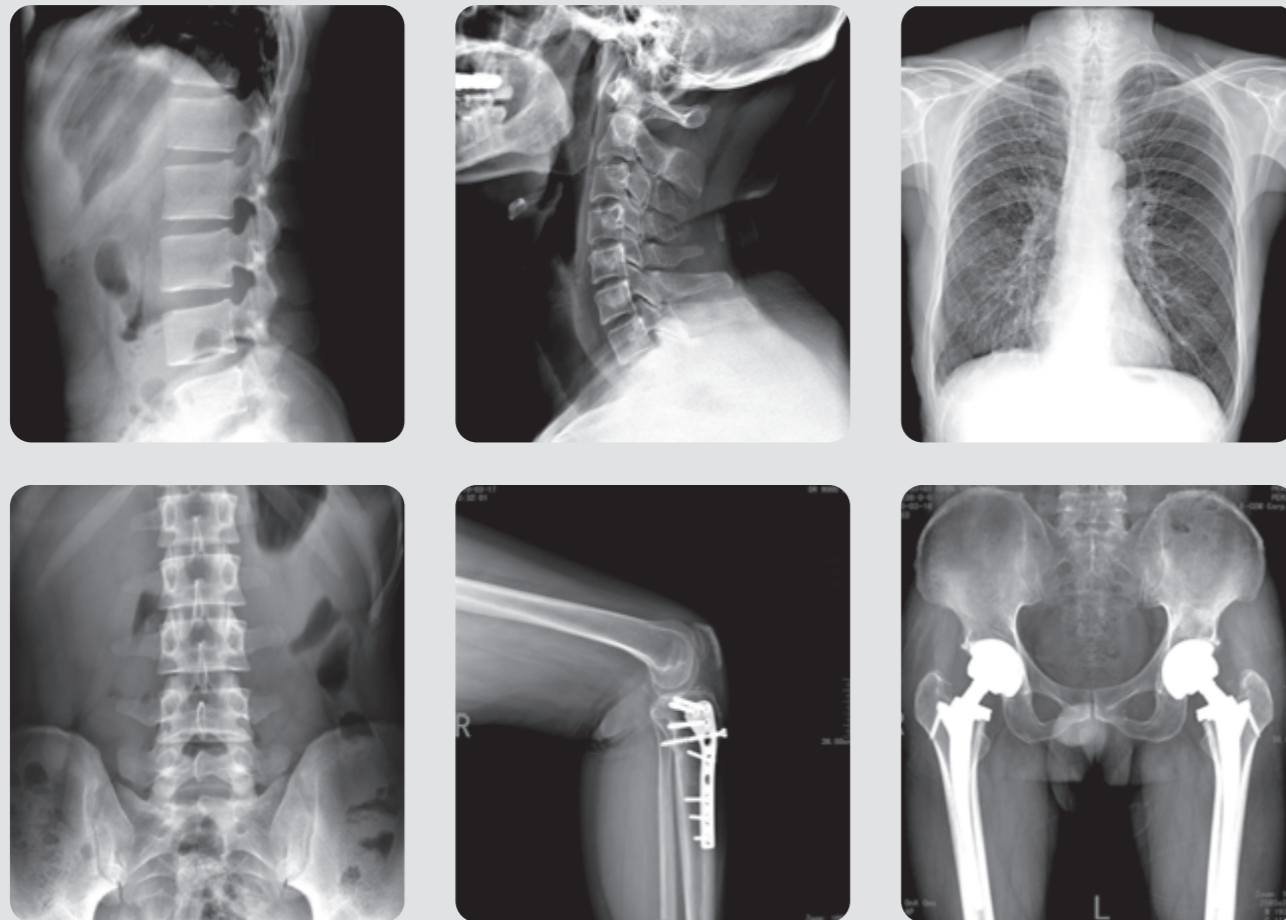
PLX8500C/D DR

High Frequency Digital Radiography System

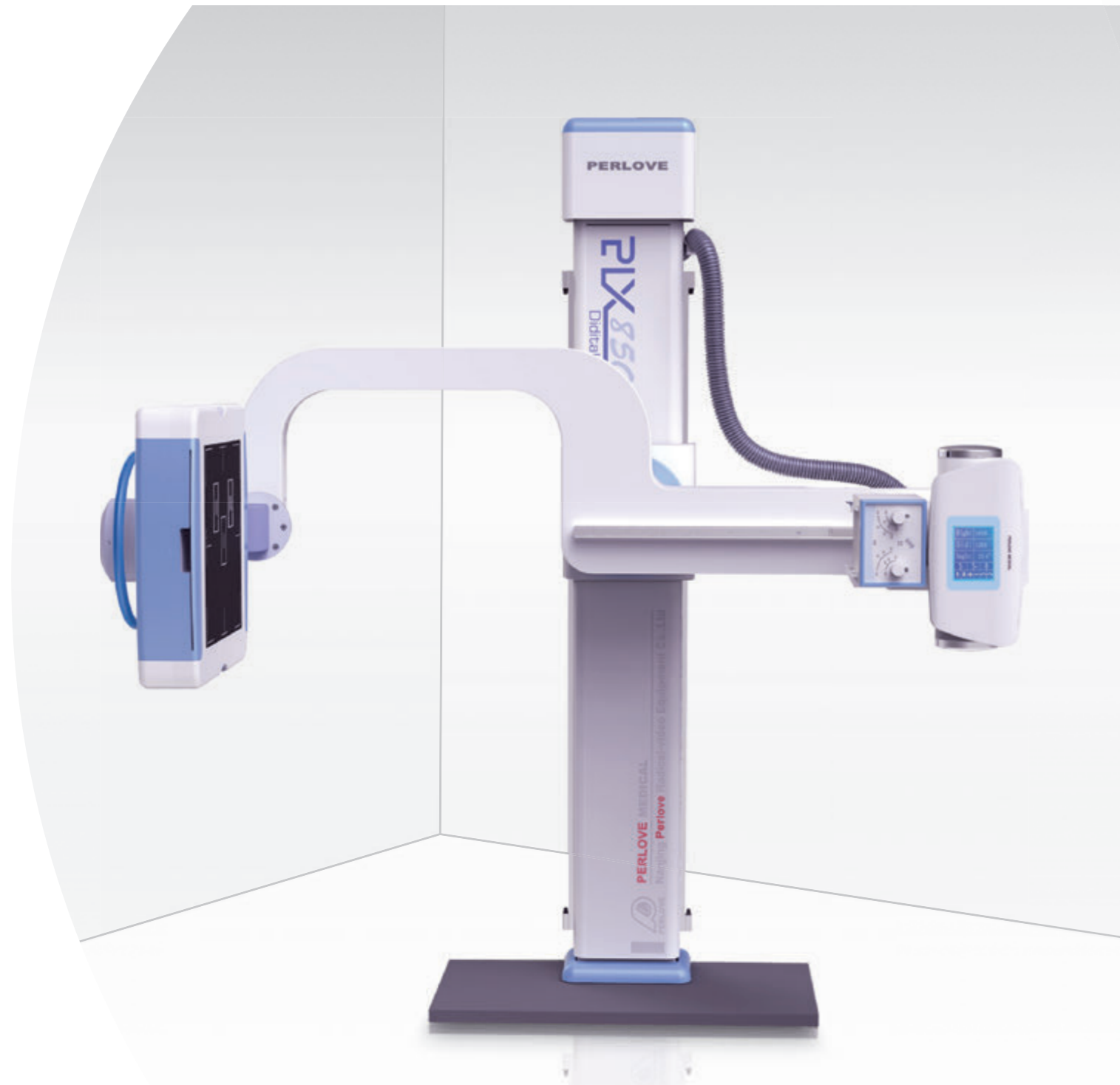
- The high imaging output of 55 kW and 65 kW allows short-time radiography, virtually eliminating any motion blurring.
- Flexible mechanical design ensures the intelligent, friendly and convenient operation.
- Powerful network functions satisfy the requirements all levels of hospitals.
- Intelligent and friendly user interface make it easy for new operator.
- Convenient image processing system and high definition medical display system provide efficient and accurate diagnosis.

Sharp image support your accurate diagnose

55/65 kW generator make us different ,our generator assures the best image in every operating condition along with reduced patient dose and extend x-ray tube lifetime



Excellent, Stable



DR Detector

- ※ Flat panel detector improves your workflow, exam speed and comfort with efficiency.
- ※ A-si detector with CSI screen , excellent spatial resolution.
- ※ Active area :17" × 17" .

X-ray source assembly

- ※ Our generator provide the right amount of penetration, reducing exposure times and retakes.
- ※ Automatic exposure control (AEC) enables auto selection of radiographic factors, saves time, eliminates retakes, increases diagnostic capability and lowers the radiation dose.

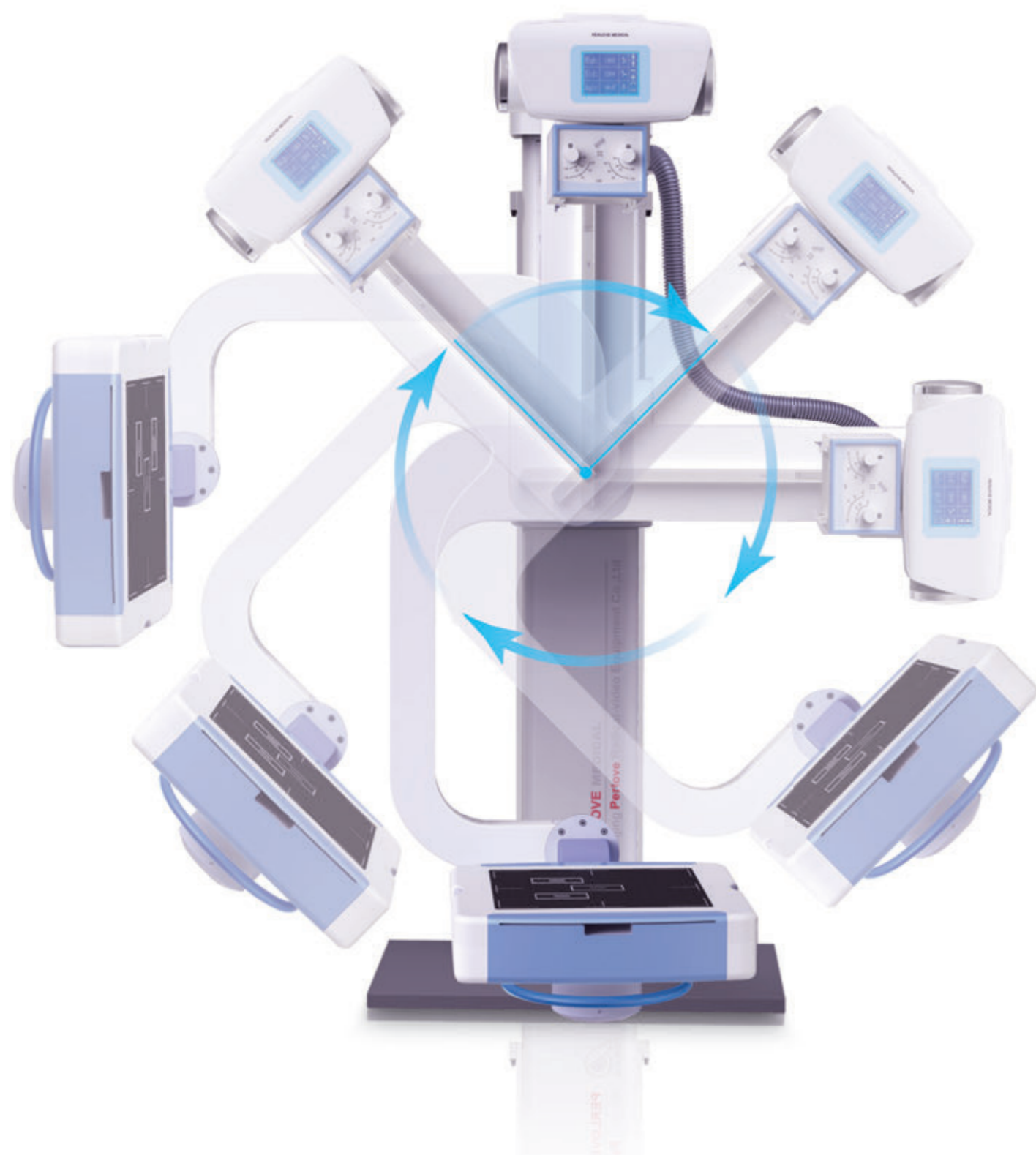


Control consol

- ※ Human graphic LCD touch screen control console
- ※ Preprogrammed data setting.

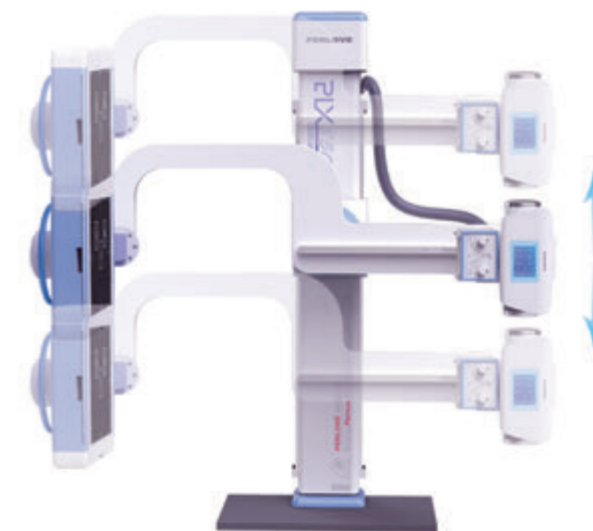
PLX8500C/D DR

High Frequency Digital Radiography System



Mechanical system

- ※Multi-automatic protection and error code indicator ensure convenient maintenance.
- ※Attractive design U-arm frame, fully automatic motorized movement, widely used for standing and decubitus positions.
- ※Safety features protect against collision with patient and obstacles.
- ※Multi kinds of control method provide instant access to patient data and key parameters.



Technical Parameters

Model	PLX8500C	PLX8500D
Power Output	55kW	65 kW
Frequency	60kHz	60kHz
Tube Current	100~500mA	100~650mA
Tube Voltage	40~150kV	40~150kV
mAs	0.1~630mAs	0.1~630mAs
Exposure Time	0.001~12.5s	0.001~12.5s
Focus Size	0.6/1.2	0.6/1.2
Detector Type	Flat panel detector	Flat panel detector
Vision Size	17"x17"	17"x17"
Spatial Resolution Limit	3.6Lp/mm	3.6Lp/mm
Pixel Size	3Kx3K	3Kx3K
Power	380V ,50Hz	380V ,50Hz



LCD touch screen



Hand-held controller



Remote-control system