

# BLOOD & INFUSION WARMER

## QW3



# BLOOD & INFUSION WARMER

## QW3

### FEATURES

#### Technology of control:

- Microprocessor system provides high precise control, permanent running self-tests and malfunction alarms

#### No extra disposables:

- Grooved dry heating plate enables to use routine transfusion / infusion tubing

#### Double locks:

- The magnetic cover and extra clamp to secure the tubing positioning

#### Accurate temperature monitoring:

- Three sets of independent temperature sensor and numerical display for real-time temperature or set temperature in 0.1°C

#### Multiple protections for high safety:

- High temperature cut-off, low temperature alarm and sensor fault alarm

#### Unique high temperature alarm testing function:

- Extra safe in use and easy for maintenance

#### Wide range of IV tube compatible:

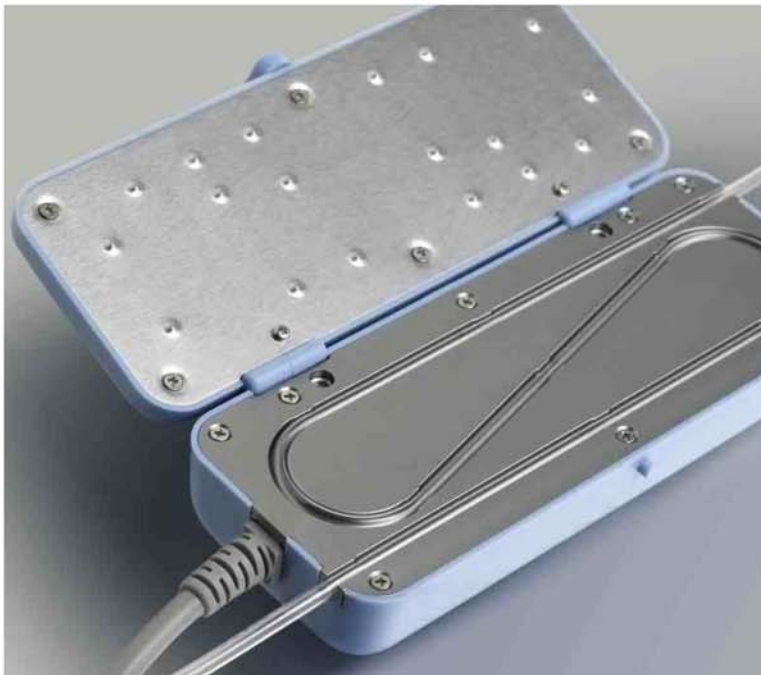
- 3.5-5.0 mm O.D.

#### Recommended flow rate:

- kvo ~ 16ml/min

#### Simple operation and quick warming up:

- Insert the tube, set the temperature, warm up from 20°C to 36°C within 45 second and ready to serve the patient



### TECHNICAL SPECIFICATIONS

Model:	QW3
Temperature setting:	37°C ~ 42°C
Power supply:	AC230V±10%/50~60Hz
Power consumption:	Max. 80VA
Type of protection against electric shock:	Class I
Degree of protection against electric shock:	Type B
Degree of protection against ingress of liquids:	IPX1
Temperature accuracy:	±1.0°C
Overheat protection:	43°C / 45°C / 48±3°C
Low temperature alarm:	36 °C
Warming up time:	<45sec (20°C - 36°C)
Operating mode:	Continuous
Dimension (W*D*H):	180×75×40mm
Weight:	0.7kg

\* Subject to technical modifications without notice

Distributor:

