



MANUFACTURE STANDARD, MANUFACTURE RELIANCE

RT-9600

Semi-auto Chemistry Analyzer

WHAT'S NEW

GRATING OPTICS

TOUCH SCREEN

USB PORT

SD CARD SUPPORT



Features

- Easy Windows operation system with large touch-screen
- Displays the reaction curve in real-time
- Continuously wavelength adjustable grating, enhances the stability and reliability
- Reagent-open system supports flow cell and cuvette mode, close system on request
- Analytical modes include kinetic, fixed time, bichromatic end point with or without reagent blank or sample blank, linear or non-linear calibration
- Large memory, up to 200 test protocols and 10000 results can be stored
- Powerful QC program: Westgard multi-rule, Levey-Jennings plots, 2 controls per test
- Multiform result output including patient comprehensive report
- Multi-interface support RS-232, VGA, USB, SD and Ethernet
- Easy communication with PC
- Compact design enables USER-DIY maintenance
- Multi-language software available on request



RT-9600

Semi-auto Chemistry Analyzer

Test Report

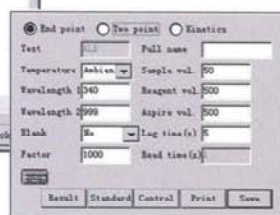
Name: Rose Sex: Female Age: 35 Sample NO: 002
 Medical NO: xxx Section: xxx Area: xxx Sender: Smith
 Bed NO: 010 Diagnosis: Send date: 14/10/2006

Program	Full name	Result	Unit	Diagnosis	Reference range
ALT	ALT	25.426	U/L	-	0.00-40.00
AST	AST	30.109	U/L	-	0.00-40.00
TP	TP	95.768	g/L	↑	46.00-87.00
TBIL	TBIL	1.342	mg/L	↑	0.10- 1.10

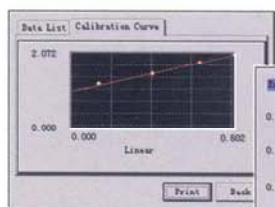
Print date: 14/10/2006 Test date: 14/10/2006 Operator: Checker:
 Note:



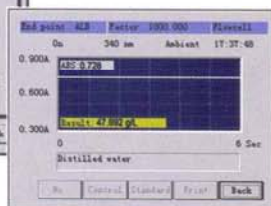
Test list



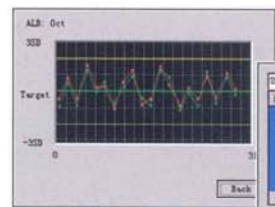
Programming



Calibration



Reaction curve



Quality control

R	SN	Sex	Age	Sender
1	2006-10-13	Male	35	Smith
2	2006-10-13	Female	35	Smith
3	2006-10-13	Female	21	Smith

Patient data management

Technical Specifications

Absorbance Range	-0.500 - 3.500Abs
Resolution	0.001Abs(displayed), 0.0001Abs(calculated)
Light Source	Halogen lamp, 12V/20W
Wavelengths	Continuously adjusted grating, wavelength range is 330 - 800nm, 1nm by step adjustment
Wavelength Accuracy	± 1nm
Band Width	< 6nm
Flow Cell	Metal - quartz flow cell
Temperature Control	25 °C, 30 °C, 37 °C, ±0.1 °C and ambient temperature
Cross Contamination Rate	< 1%
Memory	200 test protocols, up to 10000 test results, support SD to expand memory
Display	6.4" color/mono LCD
Output	Built-in printer or external printer
Input	Touch screen, mouse and keyboard optional
Interface	RS-232, support VGA, 2 USB, SD, Ethernet
Language	English or any language on request
Power Supply	AC 110V/220V ± 10%, 50/60Hz
Net Weight	10KG
Dimensions L x W x H(mm)	370 x 284 x 318



RT-A19 Incubator (optional)